



PI-0806 Series Cube ICE Maker

- ✓ Produces up to 1094 lbs. (497 Kgs.)* of ICE per day
- ✓ Constructed from sturdy, corrosion-resistant 300 series stainless steel
- ✓ Ultra-low profile - 26 inches (660 mm) tall
- ✓ Available with an air-cooled condenser



PI-0806 on a B55 Bin

Powerline is the Best ICE Making Solution for: Hard Water, Food Safety and Tight Spaces

Problem

Food Safety

Food safety concerns about slime- and odor-causing bacteria

Hard Water

Scaling due to hard water slows Ice production

Tight-Fitting Spaces

Inadequate air flow due to tight-fitting spaces reduces Ice production

Corrosion

Salt air corrosion of outdoor equipment located in coastal regions

Solution

PURE ICE®

Built-in antimicrobial protection for the life of the machine prevents bacteria and slime fungus growth. Powerline's optional water filtration system provides protection against unpleasant tastes, odors and scale formation.

Harvest Assist

Consistent ICE production 24/7 for the life of the machine, while reducing operating costs

Maximum ICE

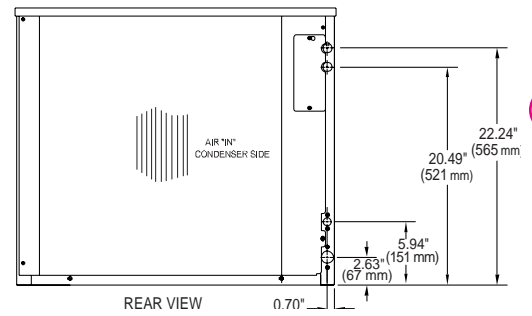
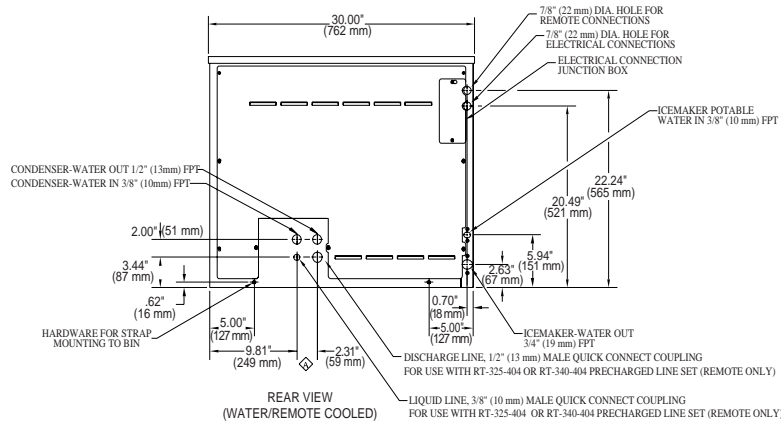
Maximum ICE production in a minimum amount of space with an ultra-low profile - 30 inches wide / 26 inches tall

Sea Salt Corrosion Protection

All remote condensers are coated with a salt air corrosion protectant – FREE

*Rated at 70 ° (21°) Air / 50° (10°) Water

PI-0806 Series Cube ICE Maker



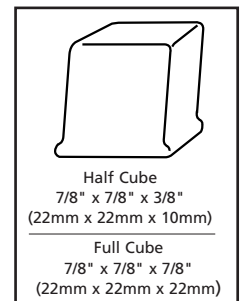
ICE PRODUCTION CHART POUNDS (KILOGRAMS) PER 24 HOURS

		PI-0806			PI-0805			
Conds. Unit	Air Temp. °F (°C)	Water Temp. °F (°C)			Air Temp. °F (°C)	Water Temp. °F (°C)		
		80°(27°)	70°(21°)	50°(10°)		80°(27°)	70°(21°)	50°(10°)
Air Cooled	90° (32°)	649 (295)	698 (317)	802 (365)	90° (32°)	572 (260)	615 (280)	728 (331)
	80° (27°)	744 (338)	800 (364)	880 (400)	80° (27°)	687 (312)	738 (336)	812 (369)
	70° (21°)	810 (368)	871 (396)	958 (435)	70° (21°)	758 (345)	815 (371)	897 (408)

- 90°/70° figures are rated in accordance with ARI Standard 810. All remaining points are mathematical estimates.
- All specifications and performance data are subject to normal manufacturing variances.

OPERATING LIMITS

Ambient Temp. Range	50° - 110°F (10° - 43°C)
Air & Water	50° - 110°F (10° - 43°C)
Remote	-20° - 110°F (-29° - 43°C)
Water Temp. Range	40° - 100°F (4.5° - 38°C)
Water Pressure Ice Maker	Min. 20 psi (1.4 bar)
Water in	Max. 60 psi (6.9 bar)
Condenser Inlet Water (Water cooled only)	Min. 20 psi (1.4 bar) Max. 60 psi (6.9 bar)



ORDERING AND SPECIFICATION INFORMATION

Model No.	Cond. Unit	ICE Production per 24 hrs. at 70° Air/50° Water lbs. (Kgs.)	ICE Production per 24 hrs. at 90° Air/70° Water lbs. (Kgs.)	Water Used-Gals. (Lits.) per 100 lbs. of ICE 90° Air/70° Water		Kilowatts Used per 100 lbs. of ICE 90° Air 70° Water	Btuh	Voltage Characteristics	No. of Wires	Min. Circuit Amp.	Max. Fuse Size	Shipping Weight lbs. (Kgs.)
				ICE Prod. Use	Cond. Use							
PI-0806FA	Air	958 (435)	698 (317)	21.8 (83)	n/a	6.2	15003	208-230/60/1	3	13.0	20	220 (100)
PI-0805FA	Air	897 (408)	615 (280)	21.7 (82)	n/a	6.3	13321	230/50/1	3	12.0	15	220 (100)

See Bin specification sheet for information on ICE Storage bins

Please note: air-cooled units require 6" (152 mm) clearance for air intake and exhaust.



PURE ICE® is a registered trademark of ICE-O-Matic®

We reserve the right to make changes in design and construction at any time without obligation.

©2004 Powerline Equipment Rev Code: 8003A-06/04



Powerline Equipment Company Norwalk, CT 06851 USA
 Phone: USA + 203.847.2357 Fax: USA + 203.847.6480
 www.powerlineequip.com